

Tue



From Porto (OPO) to London Stansted (STN)
Tue, 02Feb10 Flight FR8344
Depart OPO at 06:35 and arrive STN at 08:55
Convém chegar pelo menos 1 hora e 30 antes da partida.

11.30 Encontro
em frente ao Hostel ou

12:00 Saatchi Gallery
(encontro na entrada)
Várias exposições

Duke of York's HQ
King's Road, SW3 4SQ
www.saatchigallery.com
Tube: Sloane Square

Encontro às 17:00
na loja (Filmstore) do
British Film Institute
Peter Campus

BFI GALLERY -Belvedere Rd, SE1 8XT
www.bfi.org.uk/gallery
Tube: Waterloo; Embankment

Tue - Sun 11-8

Wed

10.15 Encontro
em frente ao Hostel ou

11:00 Raven Row
(encontro na entrada)
Harun Farocki

56 Artillery Lane, E1 7LS
www.ravenrow.org
Tube: Liverpool Street

Sugestão:
15:00 Victoria & Albert Museum
Porter Gallery
Decode: Digital Sensations
e várias outras exposições

Cromwell Rd, SW7 2RL
<http://www.vam.ac.uk/microsites/decode/>
Tube: South Kensington

(...)

(ver sugestões no blog e
no documento anexo)

Thurs

Encontro às 10:00 na
livraria da TATE MODERN
Várias exposições

Bankside, SE1 9TG
<http://www.tate.org.uk/modern/>

Tube: Southwark / Waterloo / Enbankment (...)

Sugestão:
fim do dia
British Museum

Great Russell St, WC1B 3DG
www.britishmuseum.org

Thurs 10-8.30

Sugestão:
fim do dia
Whitechapel
Gallery

77-82 Whitechapel High
Street, E1 7QX
www.whitechapelgallery.org

Thurs 11am-9pm

Fri



From London Stansted (STN) to Porto (OPO)
Fri, 05Feb10 Flight FR8343
Depart STN at 09:15 and arrive OPO at 11:35

Teremos de combinar a ida para o aeroporto
depois de sabermos os detalhes sobre
os transportes.
Convém chegar pelo menos 1 hora e 30 antes da partida.

SAATCHI GALLERY

Duke of York's HQ, King's Road, SW3 4SQ
Info: 020 7823 2363
www.saatchigallery.com

10am-6pm every day, free admission

Sloane Square

7/1 - 7/5/2010
EMILY PRINCE
American Servicemen...

7/1 - 7/5/2010
RICHARD WILSON : 20:50
The oil room installed in the new Gallery for the first time.

29/1 - 7/5/2010
THE EMPIRE STRIKES BACK :
INDIAN ART TODAY
An exhibition of 26 artists from the world's largest democracy.

BFI GALLERY

Belvedere Rd, SE1 8XT
020 7928 3535
www.bfi.org.uk/gallery
gallery@bfi.org.uk

Tue - Sun & bank holidays 11-8

Waterloo / Embankment

11/12/2009 - 14/2/2010
PETER CAMPUS :
OPTICKS
An exhibition of Campus' seminal close-circuit video pieces together with new commissioned works created for the BFI.

RAVEN ROW

56 Artillery Lane, E1 7LS
020 7377 4300
www.ravenrow.org
info@ravenrow.org

Wed-Sun 11-6

Liverpool Street

19/11/2009 - 7/2/2010
HARUN FAROCKI. AGAINST WHAT? AGAINST WHOM?
First UK exhibition of the multi-screen works of the revered German filmmaker.

VICTORIA AND ALBERT MUSEUM

Cromwell Rd, SW7 2RL
020 7942 2000
www.vam.ac.uk
vanda@vam.ac.uk

Daily 10am-5.45pm & 10am-10pm every Fri

South Kensington / Bus C1,14,74,414

8/12/2009 - 11/4/2010
DECODE :
DIGITAL DESIGN SENSATIONS
Curated in collaboration with onedotzero, including works by Daniel Brown, Golan Levin and Daniel Rozin, Troika and Simon Heijdens.
<http://www.vam.ac.uk/microsites/decode/http://www.vam.ac.uk/collections/contemporary/galleries/index.html>
Museum Opening Hours
10.00 to 17.45 daily
10.00 to 22.00 Fridays (selected galleries remain open after 18.00.).
Closing commences 10 mins before time stated

TATE MODERN

Bankside, SE1 9TG
020 7887 8888
<http://www.tate.org.uk/modern/>

Sun-Thur 10-6, Fri-Sat 10am-10pm

Southwark / Waterloo / Enbankment (...)

through 2009
UBS OPENINGS : TATE MODERN
COLLECTION DISPLAYS
Price: £4 (£3.50 concessions)

22/01 - 3/5/2010
Level 2 Gallery: Michael Rakowitz
The worst condition is to pass under a sword which is not one's own
22 January - 3 May 2010

13/10/2009 - 5/4/2010
THE UNILEVER SERIES :
MIROSLAW BALKA

4/2 - 16/5/2010
VAN DOESBURG AND THE
INTERNATIONAL AVANT-GARDE
£ 12.50

THE BRITISH MUSEUM

Great Russell St, WC1B 3DG
020 7323 8000
www.britishmuseum.org

Daily 10-5.30, Thurs & Fri 10-8.30

Tottenham Ct Rd / Holborn / Goodge Street / Russell Sq

22/10/2009 - 5/4/2010
REVOLUTION ON PAPER :
MEXICAN PRINTS 1910-1960

O British Museum fica na zona de Russel Square.

WHITECHAPEL GALLERY

77-82 Whitechapel High Street, E1 7QX
Info 020 7522 7878/Enq 020 7522 7888
www.whitechapelgallery.org

Tues-Sun 11am-6pm, Thurs 11am-9pm

Aldgate East / Aldgate

5/4/2009 - 18/4/2010
THE BLOOMBERG COMMISSION :
GOSHKA MACUGA

21/1 - 11/4/2010
WHERE THREE DREAMS CROSS
150 Years of Photography from India, Pakistan and Bangladesh.

A White Chapel fica próxima do local da exposição do Harun Farocki. Na quarta-feira podem sempre optar por juntar as duas visitas.

TATE BRITAIN

Millbank, SW1P 4RG

www.tate.org.uk/britain

Daily 10-5.50 NB

27/1 – 16/5/2010
CHRIS OFILI

free admission except for major exhibitions

SERPENTINE GALLERY

Kensington Gardens, W2 3XA
020 7402 6075

www.serpentinegallery.org

Daily 10-6

South Kensington / Lancaster Gate

A Serpentine situa-se em pleno Hyde Park e tem uma excelente livraria gerida pela Walter König (livraria alemã especializada em arte e que tem a sua sede em Colónia).

26/11/2009 - 7/2/2010
DESIGN REAL

Objects currently in serial, industrial production that push boundaries in form and function, curated by Konstantin Grcic

free admission

THE NATIONAL GALLERY

Trafalgar Square
London, WC2, United Kingdom

www.nationalgallery.org.uk/

Daily 10am–6pm, Fridays 10am–9pm

free admission

ROYAL ACADEMY OF ARTS

Burlington House, Piccadilly, W1J 0BD

www.royalacademy.org.uk

Daily 10-6, Fri 10-10

Piccadilly Circus / Green Park

23/1 - 18/4/2010
THE REAL VAN GOGH :
THE ARTIST AND HIS LETTERS

THE DRAWING ROOM

Tannery Arts, Brunswick Wharf, 55 Laburnum St, E2
8BD
020 7729 5333

www.drawingroom.org.uk

Wed-Sun 12-6

Old St then bus 55/243 / Liverpool St then bus
26/149/242

21/1 – 14/3/2010
SHUDDER

Edwina Ashton, Barry Doupé, Ann Course, Avish
Khebrehzadeh, Matt Mullican, Raymond Pettibon,
Naoyuki Tsuji and Markus Vater.

THE ARTS GALLERY

65 Davies Street, W1K 5DA.

www.arts.ac.uk/gallery.htm

Open: Monday – Friday 10am – 6pm

Nearest Tube: Bond Street.
Admission: free.

Mike Ballard: The All of Everything
Art will eat itself
The final exhibition to take place at the Arts Gallery,
before the building is demolished for Crossrail
10 December 2009 – the demolition of the Arts
Gallery 2010

CAMDEN ARTS CENTRE

(algo longe do centro)

www.camdenartscentre.org

Tue-Sun 10-6, Wed 10-9
Late opening every Wednesday until 9pm

Finchley Road / Hampstead

11/12/2009 - 7/3/2010
EVA HESSE :
STUDIOWORK
Work by Eva Hesse, a key figure in the history of post-war art.

11/12/2009 - 7/3/2010
KATJA STRUNZ : SOUND OF
THE PREGOMETRIC AGE

INSTITUTE OF CONTEMPORARY ART

Nash House, 12 Carlton House Terrace
London, SW1Y 5AH,
www.ica.org.uk

Sem exposições de momento mas com outros eventos, incluindo à noite. Tem também uma boa livraria.

Ver uma lista ainda mais completa de exposições em:

<http://www.newexhibitions.com/exhibitions/>

ou em

[http://www.newexhibitions.com/exhibitions/
region=0&view=print](http://www.newexhibitions.com/exhibitions/region=0&view=print)

De um modo geral, a revista Time Out London (que pode ser consultada na net ou comprado em Londres) é um guia muito útil e completo, incluindo para as saídas à noite:

<http://www.timeout.com/london/>



LIVRARIAS

A maioria dos locais a visitar tem boas livrarias especializadas. No caso de optarem por não ir à Serpentine Gallery, podem tentar a outra livraria da alemã Walter König em Londres:

Buchhandlung Walter Koenig

80 Charing Cross Road
London, WC2H 0BF, United Kingdom
020 7240 8190

Nesta zona há várias outras livrarias.

Mais livrarias, seguindo algumas listas disponíveis on-line, para facilitar a consulta.

http://www.timeout.com/london/books/features/4862/London-s_best_bookshops.html

http://www.talkingcities.co.uk/london_pages/shopping_books.htm

<http://www.urbanpath.com/london/books/>

Alfarrabistas na Central London:

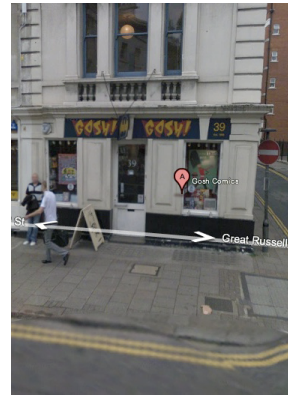
<http://www.inprint.co.uk/thebookguide/shops/london/central.shtml>

Para quem procura Comics:

Gosh!

Bloomsbury
39 Great Russell Street,
WC1B 3PH
020 7636 1011

Quite simply the best comics shop imaginable, and that's mainly due to their commitment to graphic novels, independent mini comics and manga...



<http://goshlondon.blogspot.com/>

Opening Hours

Seven Days, 10-6

Thursday & Friday 'til 7

Muito, muito perto de Russel Square...

Weather Forecast

<http://www.accuweather.com/world-forecast.asp?partner=apple&traveler=0&locCode=EUR|UK|UK241|LONDON&metric=1>

London Tube Maps:

<http://www.tfl.gov.uk/gettingaround/1106.aspx>